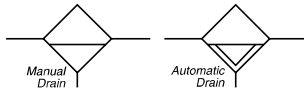


F31 Coalescing Filter



Features

- Compact Size Allows Greater Design Flexibility
- Connects to Other QUBE Units Using Just Screws and O-rings (Included)
- Integral Mounting Slots Eliminate Need for Mounting Brackets
- Removes Oil and Water Aerosols, as Well as Particulate Matter Down To 0.01 Micron.
- Pleated Element for Longer Life and Lower Pressure Drop
- Large Filter Element Surface Guarantees Low Pressure Drop and Increased Element Life
- Activated Carbon Elements Available for Oil Vapor Removal
- Transparent Polyurethane Bowl Standard
- Metal Bowl with Wraparound Sight Gauge Optional
- Manual Drain as Standard, Optional Piston Drain
- Large Bowl Capacity
- High Flow: 1/8" & 1/4" - 20 SCFM[§]

Polyurethane Bowls and Sight Gauges Offer Improved Chemical Compatibility.



| Port Size | NPT | |
|--------------------------------|--------------------|------------------|
| | Manual Twist Drain | Piston Drain |
| Polyurethane Bowl | | |
| 1/8" | F31-01AH | F31-01AHS |
| 1/4" | F31-02AH | F31-02AHS |
| Zinc Bowl / Sight Gauge | | |
| 1/8" | F31-01WH | F31-01WHS |
| 1/4" | F31-02WH | F31-02WHS |

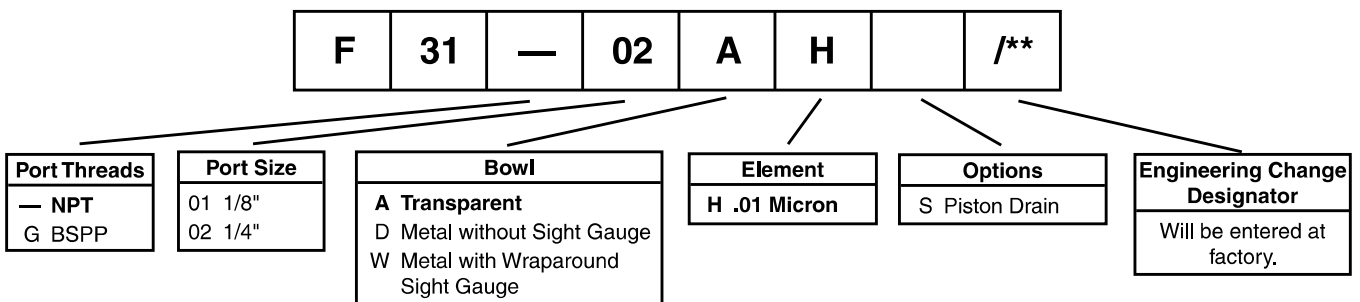
Wraparound Sight Gauge Bowl
 All QUBE filters, lubricators, and integrals are available with the Watts Wraparound Polyurethane Sight Gauge Bowl. These unique bowls provide the 360° visibility of a plastic bowl while maintaining the high strength and safety features of metal bowls. Polyurethane bowls with guards, and metal bowls, are also available.

Bold Items are Most Popular.

For other models refer to ordering information below.

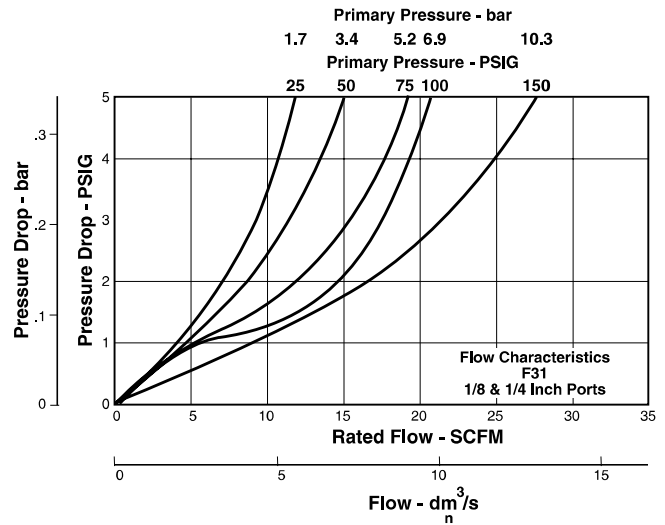
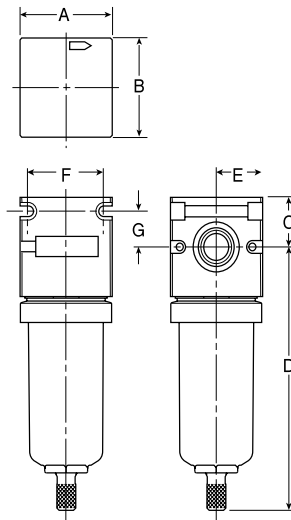
[§] SCFM = Standard Cubic Feet Per Minute at 100 PSIG Inlet, and 5 PSIG Pressure Drop.

Ordering Information



BOLD ITEMS ARE MOST POPULAR.

Technical Information



| F31 Filter Dimensions | | | | | | |
|-----------------------|----------------|----------------|-----------------|----------------|----------------|----------------|
| A | B | C | D | E | F | G |
| F31-AH, F31-DH | | | | | | |
| 1.59 (40.5) | 1.59 (40.5) | 0.81 (20.6) | 4.25 (107.9) | 0.80 (20.2) | 1.31 (33.3) | 0.58 (14.7) |
| F31-WH | | | | | | |
| 1.59 (40.5) | 1.59 (40.5) | 0.81 (20.6) | 4.27 (108.3) | 0.80 (20.2) | 1.31 (33.3) | 0.58 (14.7) |

Inches
(mm)

F31 Coalescing Filter Kits & Accessories

Bowl Kits –

- Polyurethane (A)..... BKF35A
- Zinc (D)..... BKF35D
- Zinc (W) Wraparound Sight Gauge BKF35W

Drain Kits –

- Manual Twist Drain SA600Y7-1
- Piston (Max. Pressure: 175 PSIG)..... RK504SY
- Semi-Automatic “Overnight” Drain..... SA602A7
 (Drains automatically under zero pressure)

Filter Element Kits –

- Activated Carbon EKF31A
- Coalescing..... EKF31

Face Mounting Bracket Kit (See Page 35)..... SAR35Y57

Specifications

Bowl Capacity 1.5 Ounce

Port Threads 1/4, 3/8 Inch

Pressure & Temperature Ratings –

- Polyurethane Bowl..... 0 to 150 PSIG (0 to 10.2 bar)
 40°F to 125°F (4.4°C to 52°C)
- Zinc Bowl..... 0 to 300 PSIG (0 to 20.4 bar)
 40°F to 180°F (4.4°C to 82.2°C)

- With Piston Drain..... 175 PSIG Max. Press. (11.9 bar)
 40°F to 150°F (4.4°C to 65.6°C)
- Zinc Bowl w/ Sight Gauge 0 to 250 PSIG (0 to 17.2 bar)
 With Piston Drain..... 175 PSIG Max. Press. (11.9 bar)
 40°F to 150°F (4.4°C to 65.6°C)

Weight –

- Polyurethane Bowl..... 0.7 lb. (0.31 kg) / Unit
 7 lb. (3.18 kg) / 24-unit Master Pack
- Zinc Bowl..... 0.9 lb. (0.41 kg) / Unit
 23.9 lb. (10.8 kg) / 24-unit Master Pack
- Zinc Bowl W/ Sight Gauge..... 0.96 lb. (0.44 kg) / Unit
 25.1 lb. (11.4 kg) / 24-unit Master Pack

Materials of Construction

- Body** Zinc
- Bowls** Polyurethane
 Metal (Zinc)
- Coalescing Element** Borosilicate Fiber & Polyamide Foam
- Carbon Element** Acetal 30% Glass Filled Activated Carbon
- Drain** Brass
- Seals** Buna-N



QUBE Features

Filters

Coalescing Filters

Regulators

Lubricators

Integral Filter Regulators

Combination Units

Accessories

Soft Start Valves

Mounting Brackets